



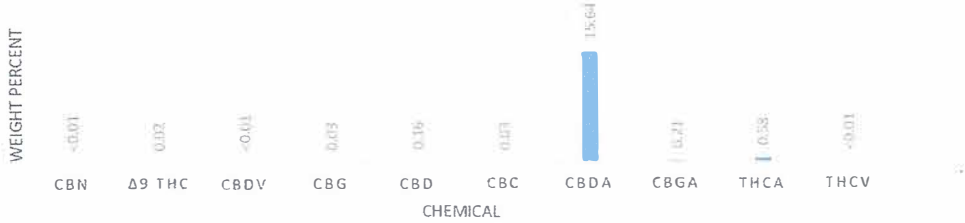
## CERTIFICATE OF ANALYSIS

**Certificate ID:** CS0171\_18900\_003\_C  
**Client Sample ID:** Electra  
**Sample Description:** Dry Hemp  
**Receive sample:** 15-Nov-18  
**Initiate analyses:** 16-Nov-18

<b>Analyst:</b> Dave Minser	<b>Signature:</b> <i>Dave Minser</i>	<b>Date:</b> 17 Nov 18
<b>Reviewed by:</b>	<b>Signature:</b> <i>Stephen C. Wernese</i>	<b>Date:</b> 18 Nov 18

**Test Type:** Total Cannabinoid Profile  
**Technical Procedure:** TP A0033-01

**Results:**



Chemical Analyzed	% Dry Weight	Concentration (mg/g)
CBN	<0.01	<0.10
Δ <sup>9</sup> THC	0.02	0.23
CBDV	<0.01	<0.10
CBG	0.03	0.31
CBD	0.16	1.58
CBC	0.03	0.34
CBDA	15.64	156.42
CBGA	0.21	2.05
THCA	0.58	5.83
THCV	<0.01	<0.10
<b>total THC *</b>	<b>0.53</b>	<b>5.34</b>
<b>total CBD *</b>	<b>13.88</b>	<b>138.76</b>
<b>total</b>	<b>16.68</b>	<b>166.76</b>

\* total THC is calculated by Δ9 THC + 0.877xTHCA  
 \* total CBD is calculated by CBD + 0.877xCBDA

Concentration of cannabinoids were determined by HPLC-MS/MS with an Avazyme intra lab validated method utilizing certified reference standards for each chemical analyzed.

Avazyme warrants that this study was performed in accordance with appropriate laboratory research practices and protocols.

Avazyme is not responsible for Sponsor's use of the Information or concepts generated as part of the study, and will not be liable for any loss or damage resulting from such use.